

## ATD-25 Series, 25Watt

### FEATURES:

- ✓ Universal AC input range
- ✓ Short circuit, and over current protections
- ✓ Board in-line type installation
- ✓ High voltage isolation
- ✓ Compact size
- ✓ Plastic case



Model	Input voltage (Vac)	Output voltage (Vdc)	Output current (mA)	Output power (W)	Efficiency (%)
ATD25-5	85-265	5	4200	25	80
ATD25-12		12	2100	25	86
ATD25-15		15	1667	25	87
ATD25-24		24	1042	25	88

Notes: Other output models may available on request.

### ELECTRICAL

Input						
Parameters	Symbols	Test Conditions / Comment	Min.	Typ.	Max.	Units
Input voltage	$V_{in}$	--	85	220	265	Vac
			120	310	380	Vdc
Input frequency	$F_{line}$	--	47	50	63	Hz
Input current	--	Vin=115Vac		0.45		A
		Vin=220Vac		0.25		A
Inrush current	--	Vin=115Vac		10		A
		Vin=220Vac		20		A
Leakage current	--	Vin=230Vac, 50Hz		0.5		mA
Efficiency	$\eta$	Full voltage, full load	76	--	83	%
External fuse recommend						3.15A-5A/250VAC slow break

**ATD-25 Series, 25Watt**
**ELECTRICAL**
**Output**

Parameters	Symbols	Test Conditions / Comment	Min.	Typ.	Max.	Units
Output voltage accuracy	--	Full input voltage range	--	±1.0	±2.0	%
Line regulation	$V_{out-line}$	$V_{in}$ from 100Vac to 240Vac	--	--	±0.5	%
Load regulation	$V_{out-load}$	20%-100% load	--	--	±1.0	%
No load power consumption	--	--	--	--	0.1	W
Ripple	$V_{ripple}$	--	--	100	--	mV
Turn-on delay time	--	--	--	500	--	ms

**Protection**

Over current	≥130% $I_o$ , continuous automatic recovery					
Over voltage	Yes					
Short circuit	Continuous automatic recovery					

**Environment**

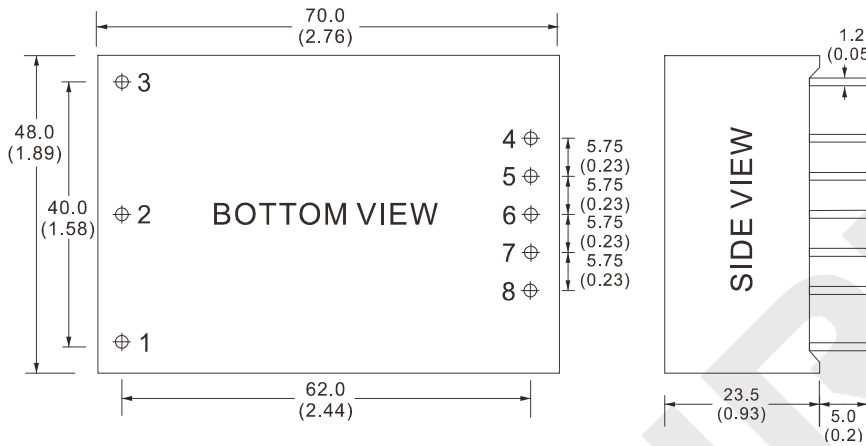
Storage	$T_{storage}$	Humidity: 5% RH to 95% RH	-40	--	+85	°C
Ambient operating temperature	$T_a$	--	-40	--	+75	°C
Operating relative humidity	$H_a$	Non condensing	10	--	90	%
MTBF	$T_{MTBF}$	--	300	--	--	kHrs

Dimension(LxWxH) 70.0x48.0x23.5mm

**Safety**

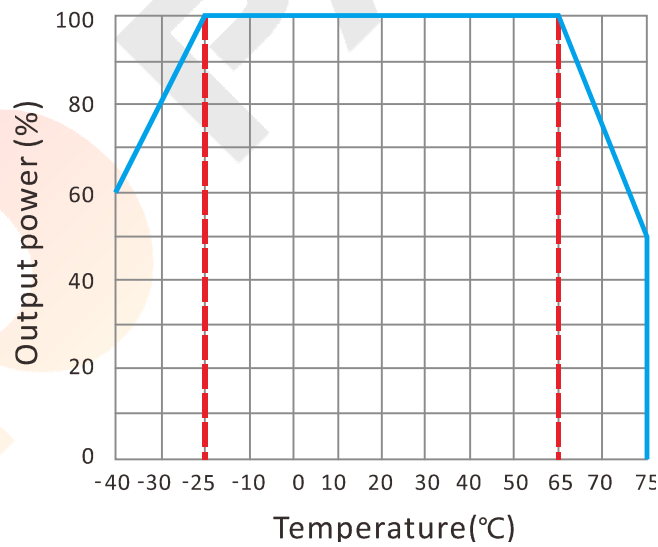
Isolation Voltage	Input-Output: 3800Vac≤1.5mA//1min					
Isolation resistance	Input-Output: 100MΩ@500Vdc					

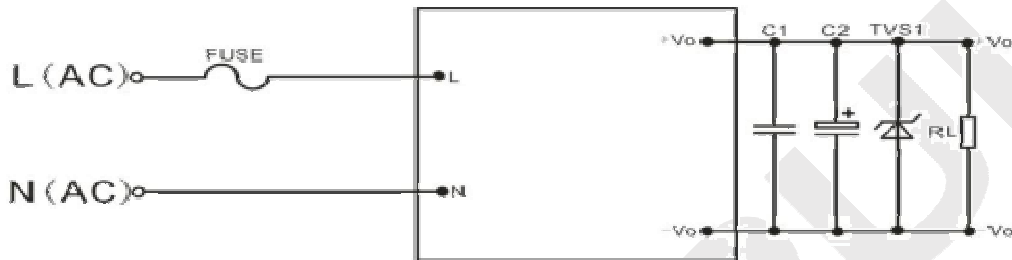
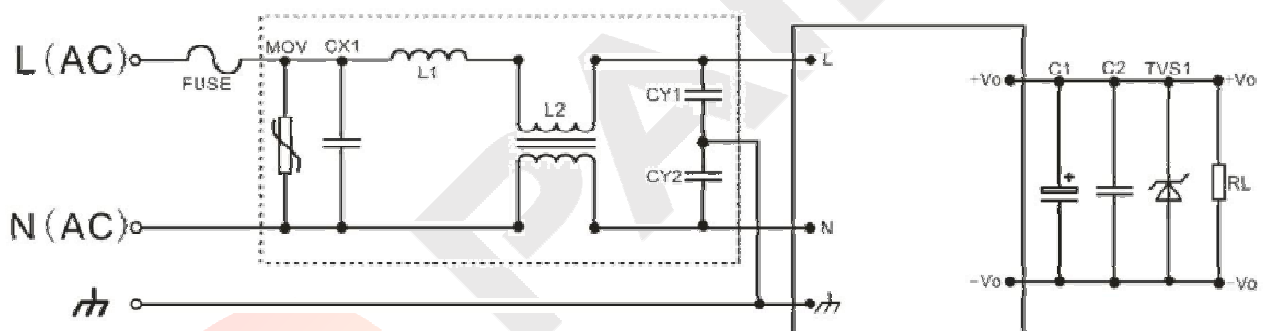
**Notes: Unless otherwise specified, all the above parameters are measured at ambient temperature of 25°C and  $V_{in}$  = 100Vac to 240Vac.**

**ATD-25 Series, 25Watt**
**MECHANICAL**

**CONNECTION**

PIN #	SINGLE
1	FG
2	AC(N)
3	AC(L)
4	+Vo
5	No Pin
6	No Pin
7	No Pin
8	-Vo

Note: Unit is mm(inch).

**ELECTRICAL CURVE**


**ATD-25 Series, 25Watt**
**NOTE**
**RECOMMENDED TEST AND APPLICATION CIRCUIT**

**RECOMMENDED TEST AND APPLICATION CIRCUIT for EMC**

**EMC RECOMMENDED APPLICATION CIRCUIT**

	5V	12V	15V	24V
MOV				14D511K
C2	470 $\mu$ F	330 $\mu$ F	220 $\mu$ F	100 $\mu$ F
TVS1	SMBJ7.0A	SMBJ15A	SMBJ20A	SMBJ30A
CX1		0.22 $\mu$ F/275Vac		
FUSE		3.15A/250Vac, slow break		
L1		2.0 $\mu$ H/2.5A		
L2		15mH/2.5A		
CY1, CY2		102M/400Vac		